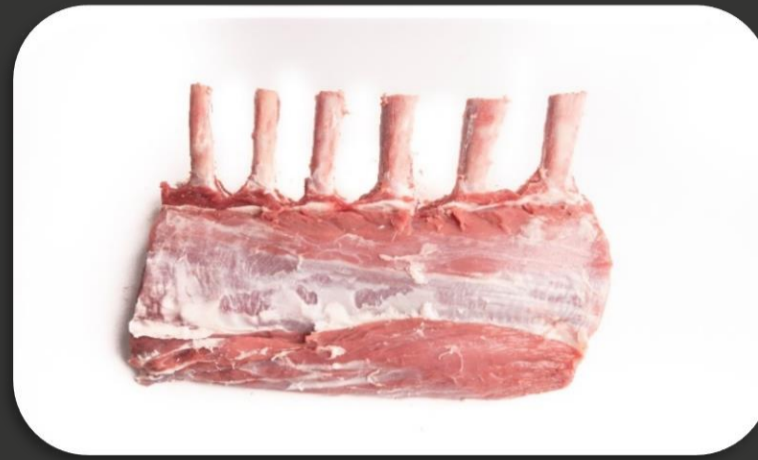


Racks 6-RIB - rose



1. General data

Article number (packaging): 33056111 (E2), 33056121 (carton), 33056321 (carton frozen)

Description: Racks 6-RIB, Krone 6-RIB

Source: EU

Consumer groups: No specific consumer groups.

2. Storage conditions

Temperature: Fresh: $\leq 4^{\circ}\text{C}$; Frozen $\leq -18^{\circ}\text{C}$

Shelf life: Vacuum fresh: 28 days after production date

Vacuum frozen: 3 years after production date

3. Usage

After opening, chilled limited shelf life ($\leq 7^{\circ}\text{C}$).

Product is a raw material intended for further processing in meat processing companies. The meat processing companies, as the next link in the chain, take over the responsibility to treat the raw material. They have to communicate its use in such a way that the subsequent link or the consumer does not experience any harmful effects from the product.

The product is intended for human consumption. Product is not suitable for raw consumption and must be heated to such an extent that all potentially harmful micro-organisms are made harmless.

Before consumption heat to at least core temperature 75°C .

4. Packaging and delivery

Material: Vacuum packaging

Temperature at delivery: Fresh: $\leq 7^{\circ}\text{C}$; Frozen $\leq -15^{\circ}\text{C}$

the finest in veal

5. Ingredient declaration

Veal meat (animals < 8 months) without further additives (CAT V)

6. Nutritional information

Analysis data per 100 gram product (average values according to literature)

| Lean Marbled | | | |
|---------------------|-----|-------------------|-----|
| Energy value (KJ) | 633 | Saturated fat (g) | 3,3 |
| Energy value (Kcal) | 158 | Sugars (g) | 0 |
| Protein total (g) | 21 | Salt (mg) | 137 |
| Fat total (g) | 8,3 | Carbohydrate (g) | 0 |

7. Allergen information

Conform EG/1169/2011

+ = present, - = absent, ? = unknown

Cereals containing gluten
(wheat, rye, barley, oats,
spelt, kamut)

| | | | |
|---|-----------------|---|---|
| - | Nuts | - | - |
| - | Celery | - | - |
| - | Mustard | - | - |
| - | Sesame | - | - |
| - | Sulphur dioxide | - | - |
| - | Lupin | - | - |
| - | Molluscs | - | - |

8. Microbiological data

| Micro organisms | Target value | Maximum value |
|--------------------|--------------------|----------------------|
| Total Plate Count | < 500.000 cfu/gram | < 5.000.000 cfu/gram |
| Enterobacteriaceae | < 1000 cfu/gram | < 10.000 cfu/gram |
| Salmonella | absent in 25 gram | absent in 25 gram |

9. Contaminations

| | |
|--------------------------------------|--|
| Physical and chemical contaminations | Through checks and working procedures we strive that the product is free from unwanted physical and chemical contaminants. |
| Packaging | Complies with regulations 1935/2001EG , 2023/2006/EG and 10/2011/EG |

| | |
|------------|----------------------|
| Date | Name |
| 13-01-2021 | VealFine (EG 643) |

the finest in veal